

# Spotter's Trail



Raising the Royal Albert Bridge trusses was a major event at the time



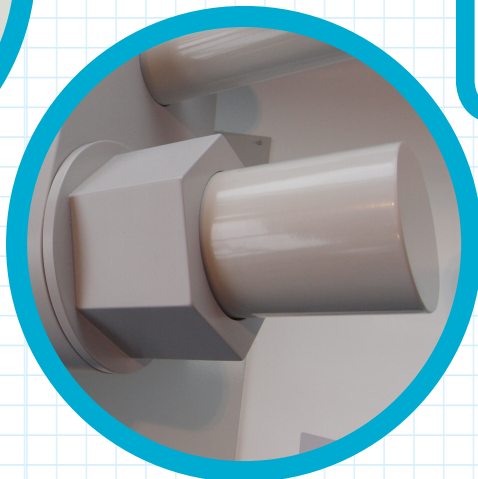
Regular maintenance is needed on both bridges



The Royal Albert Bridge was built for trains so the ferry was still needed.



It was I. K. Brunel who built the Royal Albert Bridge



Nuts and bolts

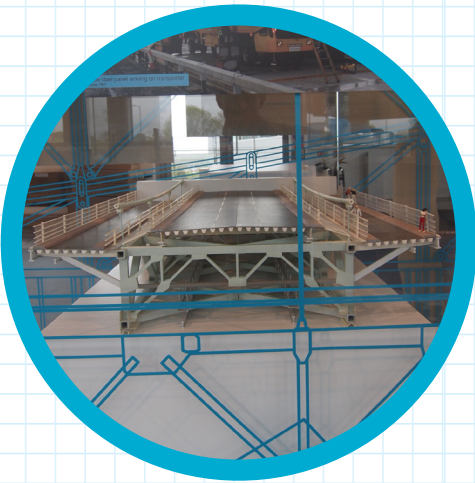
Hello, I'm Kate the engineer.  
The pictures in the circles are parts of pictures or objects that can all be found in this room. Tick them off as you find them.



There are more pictures to find on the other side



BRIDGING  
THE TAMAR

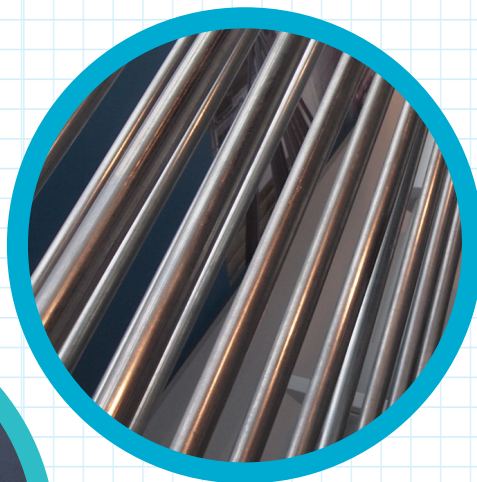


○ Raising the trusses on the Tamar Bridge



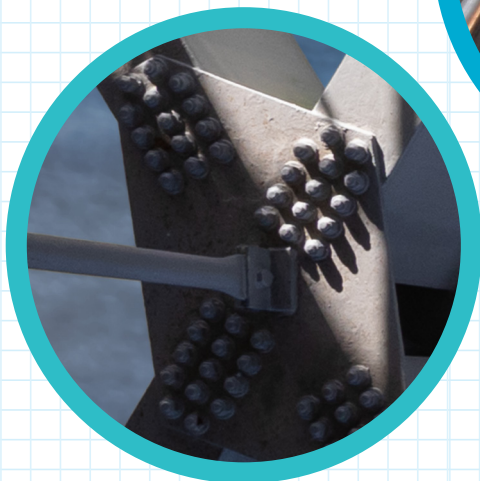
○ Centenary poster for the Royal Albert Bridge from 1959

○ In 1998 the Tamar Bridge was widened and strengthened



○ These cables are vital to the Tamar Bridge

**Congratulations!**  
You have finished, did you manage to spot them all?



○ These are rivets that hold the Tamar Bridge together - you may have to look down!



**BRIDGING  
THE TAMAR**



**HERITAGE  
FUND**